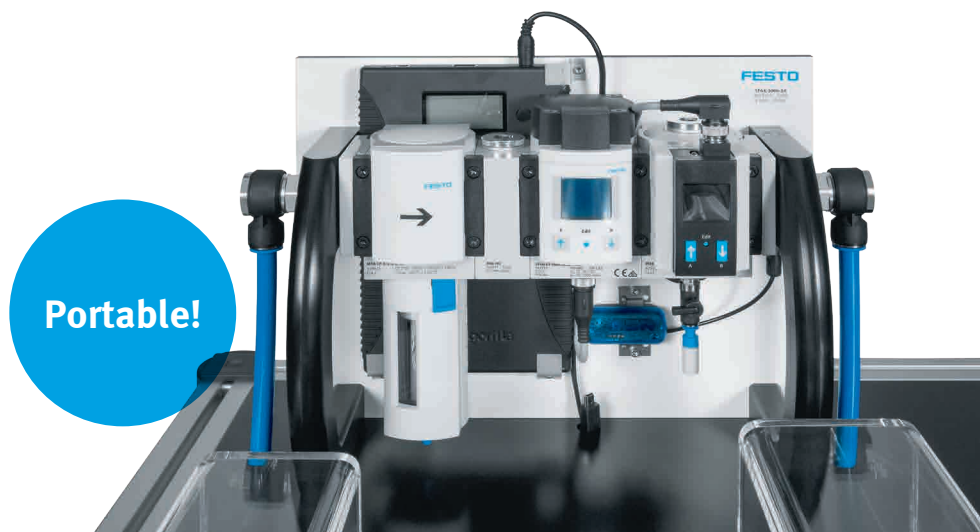


# Air-flow analyser SFGA

FESTO



## Efficient measurement and analysis

### Highlights

- Flexible flow rate and pressure measurement with a portable analysis device with integrated, rechargeable battery
- Extremely easy transfer of the measured values to a PC for data processing and documentation
- Including operating software
- Secure and tidy storage in the carrying case

The proven plug & work concept from Festo has also inspired the design of the air-flow analyser. The ready-to-install analysis case can be used straightaway and includes everything you need for efficiently and flexibly measuring compressed air consumption and flow rates in your system.

### Ideal

Measures the flow rate at the machine level during preventive maintenance of installed systems. Or documents exact consumption data for new machines – an important reference figure for a sound evaluation of the system's energy efficiency.

### Flexible

A universal data logger stores pressure and flow rate values. These can be conveniently transferred to a PC after measurement has been completed, providing on-site measurement as well as in-site evaluation and documentation.

### TPM-friendly

The ability to compare actual and setpoint values makes it easy to control the system, and provides solid values for preventive maintenance. Potentially undesirable trends thus become transparent.

### Software included

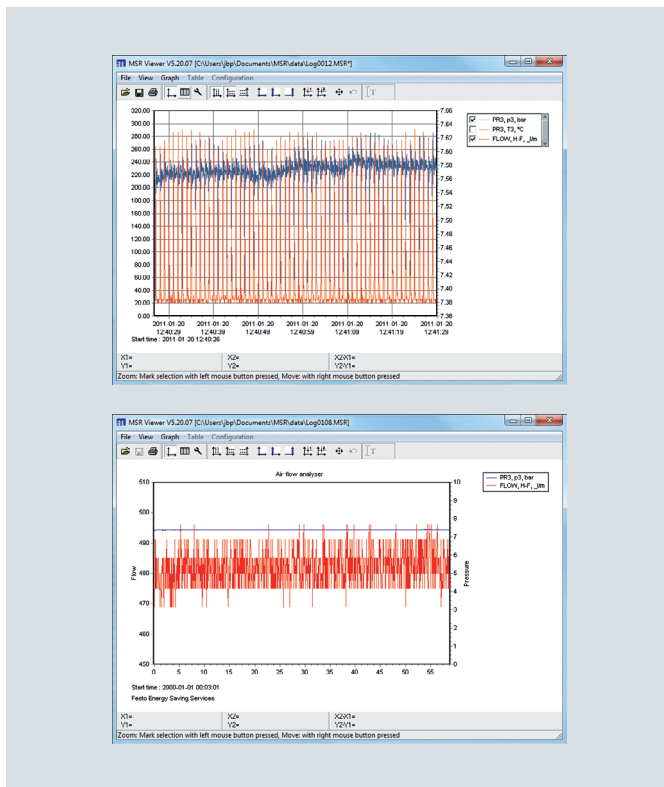
The air-flow analyser is available with operating software for data acquisition, analysis and documentation, as well as a broad range of accessories to ensure optimised use in the field. A test certificate is available on request.

# Air-flow analyser SFGA

## Recording and visualising measured values with the perfect hardware-software combination

- The air-flow analyser can be installed directly into the system's air supply line
- Sensor components are protected by a 40 µm filter
- A branching module ensures laminar flow in the sensor and avoids measuring errors
- Simultaneous pressure and flow rate measurement
- Comprehensive software package
  - Data recording
  - Convenient data analysis at a Windows PC
  - Regular online updates
- High-performance, rechargeable lithium polymer battery with visual charge level indicator

Technical data	
Storage temperature [°C]	+5 ... +45
Temperature of the operating medium [°C]	0 ... +40
Weight [kg]	6
Dimensions (length x width x height) [mm]	330 x 260 x 155
Power supply (via LiPo battery) [V]	24
Battery capacity [mAh]	21000
Flow range [l/min]	30 ... 3000
Accuracy zero point % FS (FullScale)	0,3
Accuracy range (pressure measurement) % FS (FullScale)	2
Pressure range [bar]	0 ... 10
Accuracy range (flow rate) % FS (FullScale)	3
Filter unit [µ]	40
Data logger	Max. measuring frequency: 10 Hz, freely selectable sampling/storage rates
	Memory capacity: 2 million measured values
	LED display for data recording and alarms
Software for acquiring and evaluating measurement data	Setup, reader, viewer and online software
	Windows 2000, XP, Vista, 7, 8
Visualisation	Using customer's own system via included software



## Scope of delivery

